

We would like to take this opportunity to introduce Without A Cue Productions, an entertainment company specializing in murder mystery dinner theater, interactive corporate teambuilding, and in-home events such as murder mysteries and Escape Rooms. We perform regularly in Peddler's Village in New Hope, Pennsylvania, as well as several other locations. In 2019, we produced over 480 murder mystery events, and are happy to bring top-notch entertainment to you! The founders of Without A Cue have been performing murder mysteries in the Philadelphia area since 1996.



Without A Cue
PRODUCTIONS

WITHOUT A CUE PRODUCTIONS, LLC
267.994.1056 | WITHOUTACUE.COM



@WithoutACue

1. PROFESSIONAL

Our fully-rehearsed and scripted shows feature actors who are trained professionals in the art of interactive mystery theatre.

2. FLEXIBLE STAGING

No stage is required: the event takes place right in the audience!

3. ALL SUPPLIES PROVIDED

We provide sound equipment, programs, ballots, pencils, and a prize for every show.

4. PRODUCTION ASSISTANT INCLUDED

A Production Assistant travels with every show who monitors sound and who is your point of contact throughout the entire event.

5. DEPENDABLE

Without A Cue employs over 30 actors and can handle five concurrent events – we will never cancel a show if an actor has an emergency -- all roles are double or triple cast in case of such an event.





Without A Cue

FREQUENTLY ASKED QUESTIONS

Q: WHAT DOES WAC REQUIRE FOR A PERFORMANCE?

A: A private space where actors can prepare before the show begins. A table and chair near an outlet for sound engineer. Meals/vendor platter for the actors & production assistant if your event will have a dinner break. A performance space that is closed off from the public such as a banquet space or private dining room that does not have viewing obstructions. An informed audience – guests LOVE to know that they are about to attend a murder mystery!

Q: HOW LONG DOES THE EVENT LAST?

A: 3-3 ½ hours from the moment your guests walk in to the moment they leave. This time includes breaks for dinner, ballot-collecting, and an initial 30 minutes for guests to arrive and settle while characters interact with the audience. The show itself has a run-time of 1½ - 2 hours.

Q: HOW MANY ACTORS ARE INVOLVED?

A: Four or more depending on selected theme.

Q: HOW DOES TICKETING WORK?

A: Ticket-selling is the responsibility of the client – you have the freedom to set your own ticket prices. On average, dinner theatre tickets range from \$45-\$60 per guest (dinner + show). We strongly recommend taking payment at the time of ticket reservations. Please make note of the audience maximum for the show you select. Your event does not need to be ticketed if not necessary.

Q: ARE YOUR SHOWS INTERACTIVE?

A: YES! Each guest has the opportunity to guess whodunit and win a prize at the end of the show. Several of our shows have opportunities for guests to play small roles during the show which last approximately five minutes and do not require preparation beforehand.

Q: WHEN SHOULD GUESTS EAT?

A: The meal (if you have one – dessert theater also works well!) can occur before the show starts, in which case we will take a 15 minute intermission between Act I and Act II, or the meal can occur between the two acts. The second version is our most popular timing.

CURRENT & PREVIOUS CLIENTS

- Moshulu Ship
(Philadelphia, PA)
- Maggiano's Little Italy
(Various locations)
- Adelphia Restaurant
(Deptford, NJ)
- Fisher's Tudor House
(Bensalem, PA)
- New York Fun Factory
(New York, NY)
- Harrah's Casino
(Atlantic City, NJ)
- Johnson & Johnson
(Mult. Locations)
- Penn Museum
(Philadelphia, PA)
- Marshall's Department Stores
(Lahaska, PA)
- Peddler's Village
(Lahaska, PA)
- The Palm Restaurant
(Atlantic City, NJ)
- Mars, Inc.
(Hackettstown, NJ)
- Battleship New Jersey
(Camden, NJ)
- Macy's (New York, NY)
- West Laurel Hill Cemetery
(Bala Cynwyd, PA)



"Absolutely love this theatre company. I hosted two fundraisers so far using this group as entertainment and both were huge hits. Funny, creative and very entertaining shows. Two thumbs up!! " - Lisa Lent-Miller, Old Bridge Animal Shelter

WHAT DOES THE PRICE INCLUDE?

Travel: If your venue is fewer than 80 travel miles from zip code 19090, no travel fee will apply.

A Production Manager: We provide a Production Manager for every show who monitors sound and who will also be your point of contact during the event to help everything run smoothly!

Equipment & Supplies: We provide the following: sound equipment (including microphone in case you need to make any announcements); show-specific programs and ballots; a pencil for each guest; a prize for the guest who solves the mystery; and various props and costumes necessary for the performance.

Graphics: You will receive digital copies of graphics and a blank flyer which you can use as you wish! If you would like a flyer designed, please inquire, as this is not included in the cost of the show but may be available for an additional fee.

A Complete Production: Our productions are well-rehearsed, scripted, audience-interactive, and performed by professional actors.

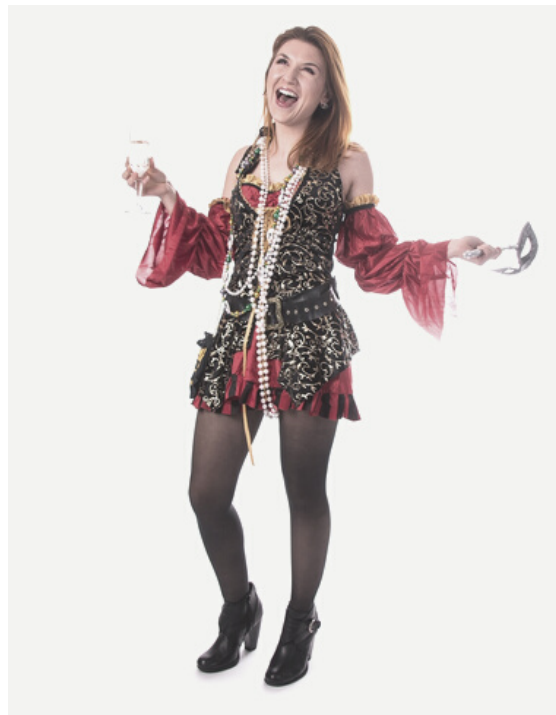


For 151-200 Guests a \$1,000.00 Fee will be charged to supply the following:

- Individual body microphones for all actors
- Additional actors to maintain our unique interactive style of entertainment
- Additional programs, ballots, and pencils
- Our larger sound system able to provide sound evenly to larger groups

For 251-300 guests a \$2,000.00 fee will be charged to supply the following:

- Individual body microphones for all actors
- Additional actors to maintain our unique interactive style of entertainment
- Additional programs, ballots, and pencils
- Our larger sound system able to provide sound evenly to larger groups
- Raised platforms to be set up throughout the space
- An additional Production Assistant



**PLEASE NOTE PRODUCTIONS AVAILABLE FOR 150+ GUESTS ARE MARKED WITH:
*AVAILABLE FOR 150+ GUESTS IF REQUIRED!**



Without A Cue

ADDITIONAL SERVICES/FEES

Team-Building Services (\$500.00):

We provide additional materials to promote teamwork and leadership skills. Additional information regarding team-building services is available upon request.

Travel Fees (\$500 + \$100/Without A Cue member):

For venues 80-120 travel miles from zip code 19090, a \$500 transportation fee will apply. For venues more than 120 travel miles from zip code 19090, a transportation fee of \$500 will apply plus \$100/Without A Cue Member. Our smallest productions have three Without A Cue employees.

THANK YOU FOR CONTACTING WITHOUT A CUE!

FOR DATE INQUIRIES AND SHOW AVAILABILITY:

TRACI CONNAUGHTON

EXECUTIVE DIRECTOR

ADMIN@WITHOUTACUE.COM

PH: 267.994.1056

WWW.WITHOUTACUE.COM

FOLLOW US AND FRIEND US!

FACEBOOK.COM/WITHOUTACUE

@WITHOUTACUE

